

何東鐵

宇宙 凸版 65 × 95 公分

「宇宙」象徵一種有關宇宙空間像是個黑洞的心理狀態，兩個同心圓象徵陰陽的哲學思想。

Ha, Dong - Chul

Cosmos Relief 65 × 95 cm

My work "The Cosmos" is represented a Psychological mind about cosmic space like a black hole. Two groups of concentric circles are symbolizing the principle of Yin and Yang Philosophy.



韓雲晟

仙桃 平版 45 × 45 公分

天堂應該是一個純淨、公平，而且絢麗的世界，存在於天堂裏的物體，其意象自然是美妙的物體。

Han, Un-Sung

Heavenly Peach Planograph 45 × 45 cm

Heaven is portrayed as a pure, just, and magnificent world. Heavenly beings are the manifestations of beauty.



金益模

白日夢光景 9991

絹印 50 × 70.5 公分

這些意象是我童年回憶的片段，當收集自然美景的念頭盈溢時，靈感也就源源不絕。

Kim, Ik-Mo

Landscape of Daydream 9991

Silkscreen 50 × 70.5 cm

These images are fractions of the memories of my childhood. These days, I get excited when the idea of collecting an image of nature occurs to me.

金貞花

慾望 I

平版 42 × 30 公分

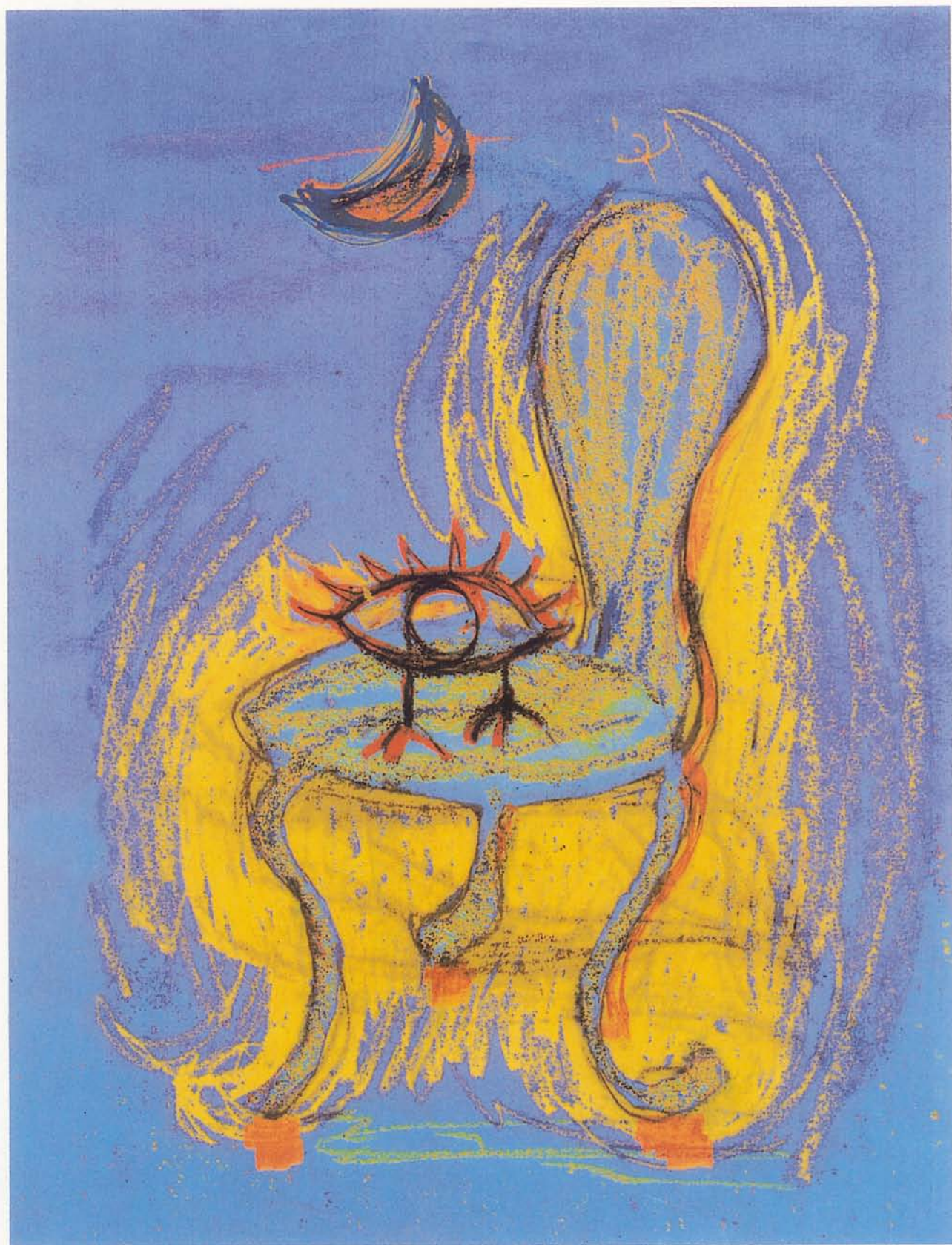
在凝視某件日常物體之後，自由描繪出擬人化的、變幻的生物造形。傳達一種女性內在騷動的想像力與熱情，並揭露人們潛意識中的浪漫本質。

Kim, Jeoung-Hwa

A Desire I

Planograph 42 × 30 cm

The artist gazes on a commonplace object, and freely produces images that are lively and ever-changing personifications. The work transmits the rich undercurrent of feminine imagination and passion, and arouses the romantic essence in the subconsciousness.



1/10

a desire I

Kim Jeoung Hwa.



金頌永

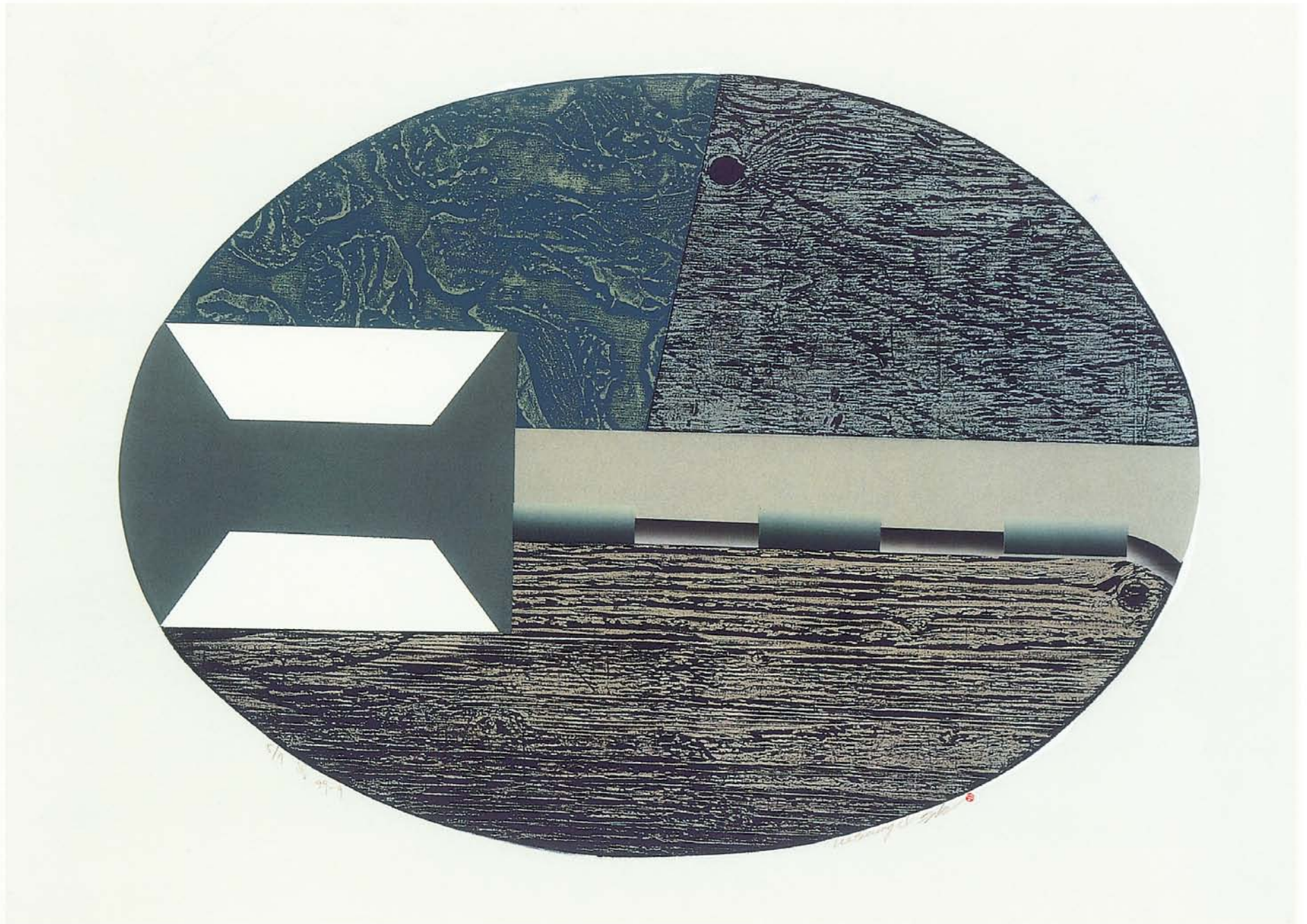
夜景 - 9808 凹版(腐蝕銅版) 76 × 96 公分

我的風景幾乎都是白天的種種，以及已經環繞在我們四周的一般事物。同時，我的風景也沒有限制於城市特定區域的主題，而是一種隨意的拼貼與漢城各區的集錦。

Kim, Seung-Yeon

Night Landscape - 9808 Intaglio (Etching) 76 × 96 cm

My landscape is almost daily events and ordinary things already existing around us. Also, my landscape is no limit in subject matter to specific area of cities but rather a random collage and collection of differing area of Seoul.



李承一

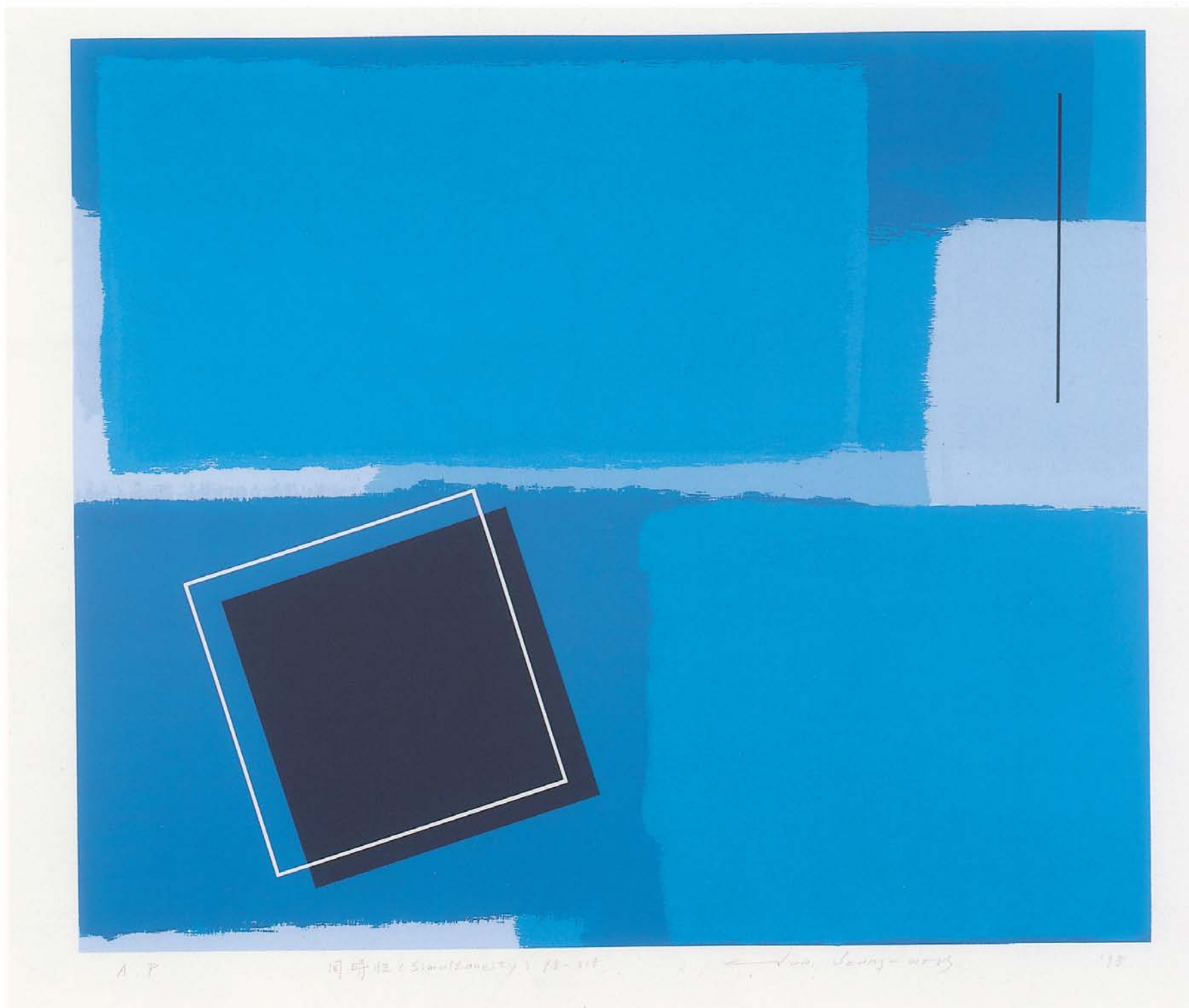
空 99 - 9 凸版(木版) 80 × 110 公分

世界蘊涵著多元的變化與對立，我以各種紋理的造形來統合，橢圓就是這種最終空間的象徵。

Lee, Seung-IL

Emptiness 99 - 9 Relief (Wood Block) 80 × 110 cm

Carvings that represent individualism, unconsciousness and spontaneity are used to portray the inevitable order of the universe.



徐承元

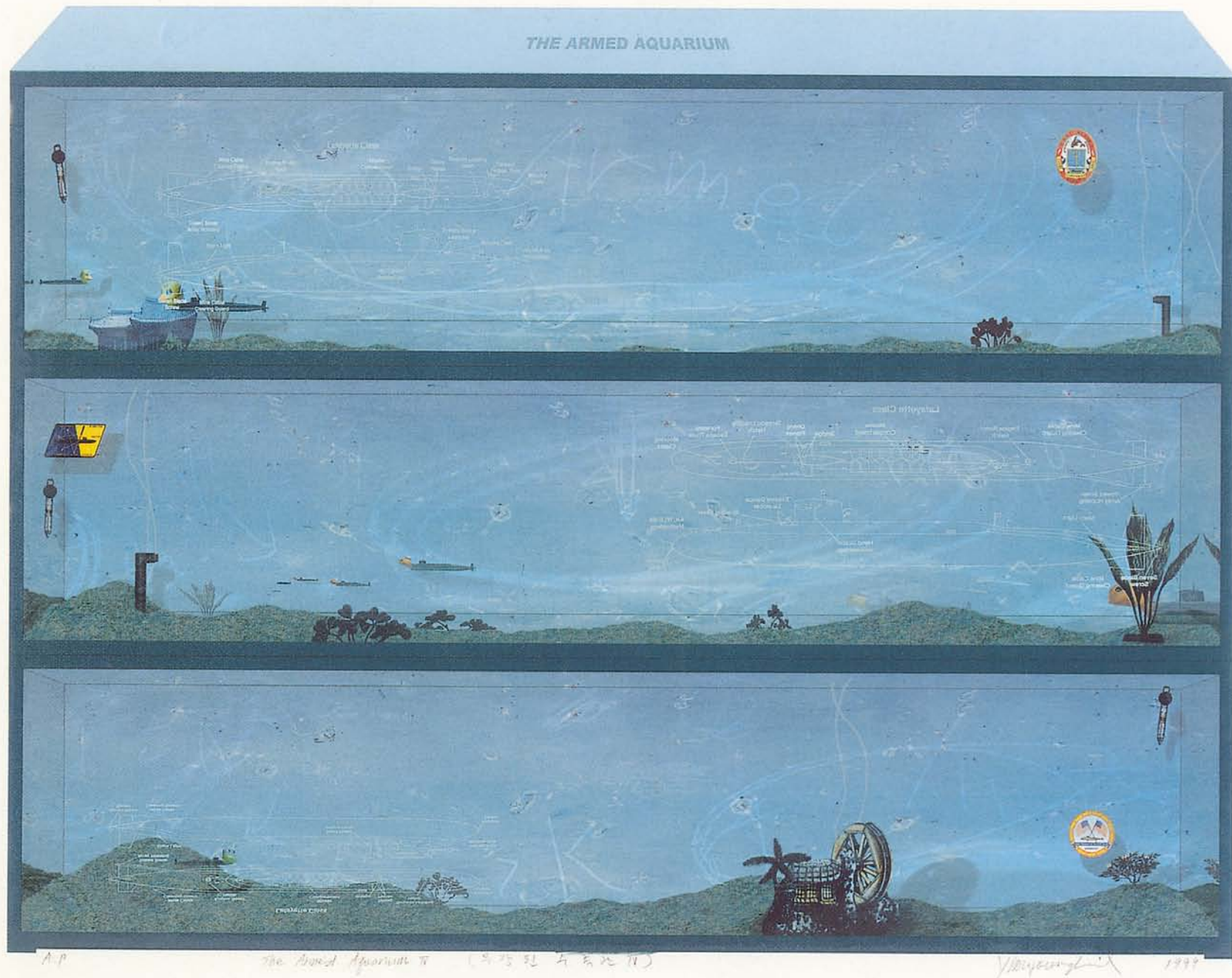
同時性 99 - 絹印 70 × 89 公分

定義圖形的線條是一種生命的表現，也就是一種特殊的美學表達方式與自創一格的空間。這些組成要素，與脈動而原始的空間相結合。

Suh, Seung-Won

Simultaneity 99 - Silkscreen 70 × 89 cm

The lines which define the forms have an expression of life, that is to say, a distinctive aesthetic expression and create a space of their own. These elements combine to create a space which is both breathing and original.



林英吉

装甲水族箱 IV

平版 74 × 97 公分

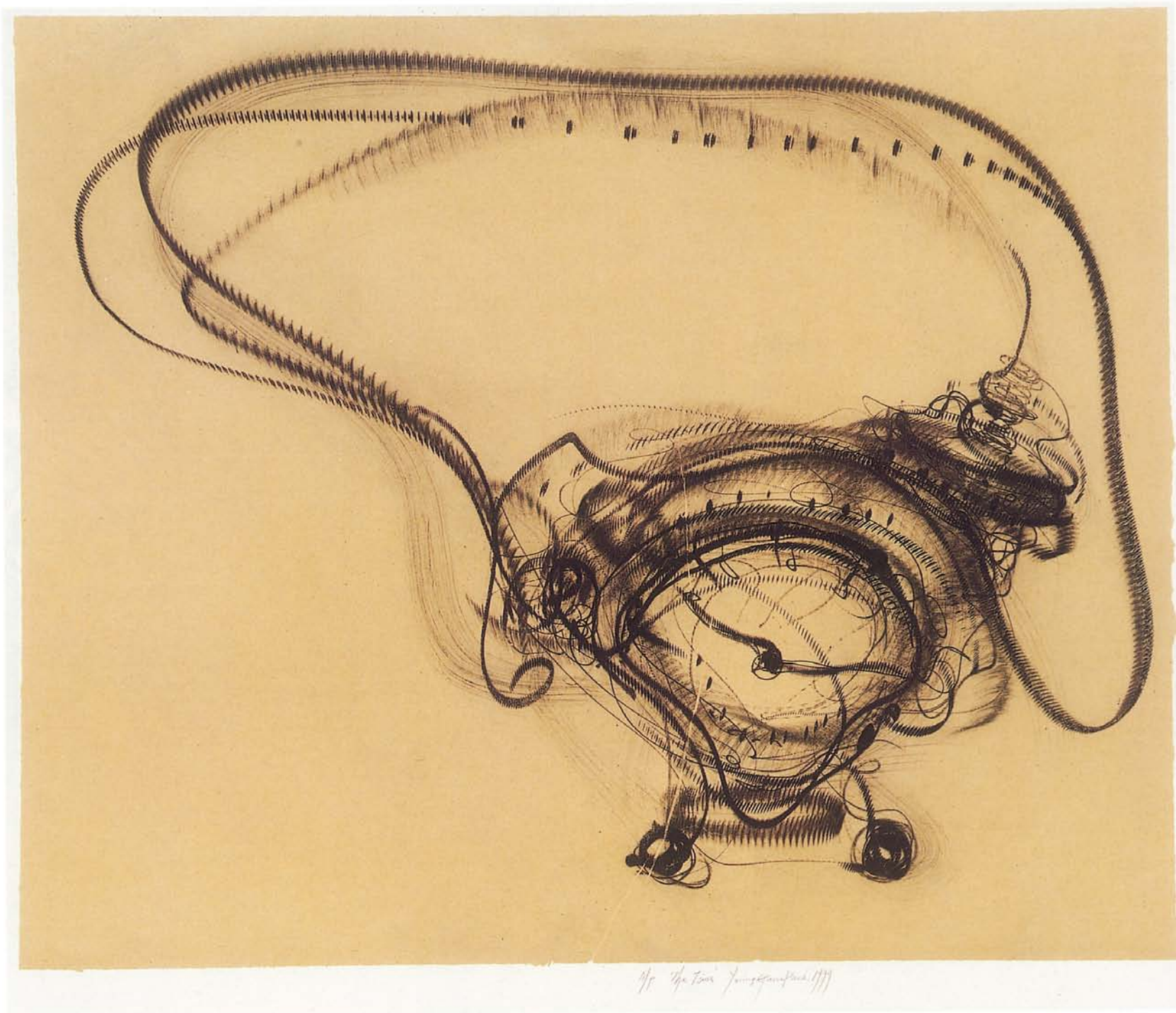
利用虛擬的電腦世界，傳達複次元的空間意象。

Yim, Young-Kil

The Armed Aquarium IV

Planograph 74 × 97 cm

The virtual world of the computer conveys the image of multi-dimensional space.



朴永根

時間

凹版 (直雕法) 87 × 100 公分

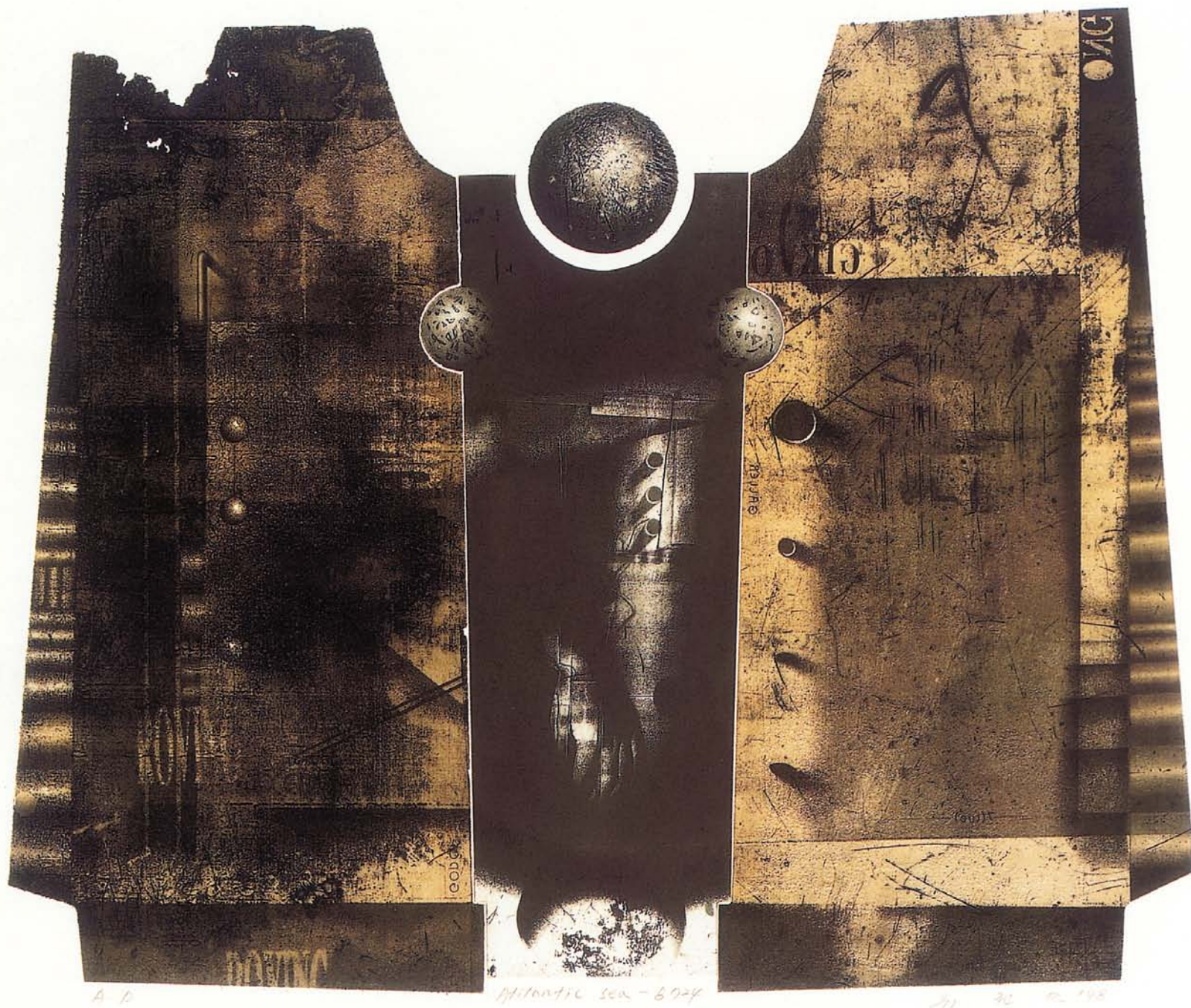
作品似乎是長時間曝光的移動物體的照片，用來描述物體的生命。旋轉的線條與作品中流露情感的速度，打破了物體的外在形體。

Park, Young-Geun

The Time

Intaglio (Dry Point) 87 × 100 cm

His works seem to be long-time-exposed photographs of moving objects, to express the mode of being of things. Swirling lines and demonstrative speed of his works break down the cohesive appearance of things.



柳權烈

亞特蘭提斯之海 - B724 凹版(腐蝕銅版) 90 × 101 公分

亞特蘭提斯是我作品的主題。亞特蘭提斯意即透過失落的實體而重回理想。我以超現實的主觀手法，雕出這不可知的偉大的文明疤痕。

Yu, Kwon-Yeol

Atlantis Sea - B724 Intaglio (Etching) 90 × 101 cm

Atlantis is the theme of my work. Atlantis mean the return of utopia demonstrated through a lost concreteness.

I depict scars of an unidentified great civilization by a surrealist composition except objectivity.