



National Taiwan Arts

Education Center Introduction

國立臺灣藝術教育館簡介

National Taiwan Arts Education Center

Brief Introduction

目 錄

Table of Contents 1



本館的沿革

Milestones 2



組 織

Organization 4



本館的公共服務設施

Public Service Facilities 6



重要館務發展概況

Important Developments 8



未來展望

Future Outlook 36



本館業務聯絡電話及傳真

Contact Us 38



本館交通路線及地理位置

Getting Here 42



本館出版品銷售書目

Publications 52



一、本館的沿革

- (一) 教育部為加強社會教育，推展藝術活動，於民國四十五年秋天擇定台北市南海路植物園籌建本館，並於民國四十六年三月二十九日正式成立，定名為「國立藝術館」；七十三年發布暫行組織規程，更名為「國立臺灣藝術教育館」；七十四年正式公布組織條例，以掌理臺灣地區藝術教育之研究、推廣與輔導等事宜為任務。



本館座落於植物園中

The Center's located in the Botanical Gardens

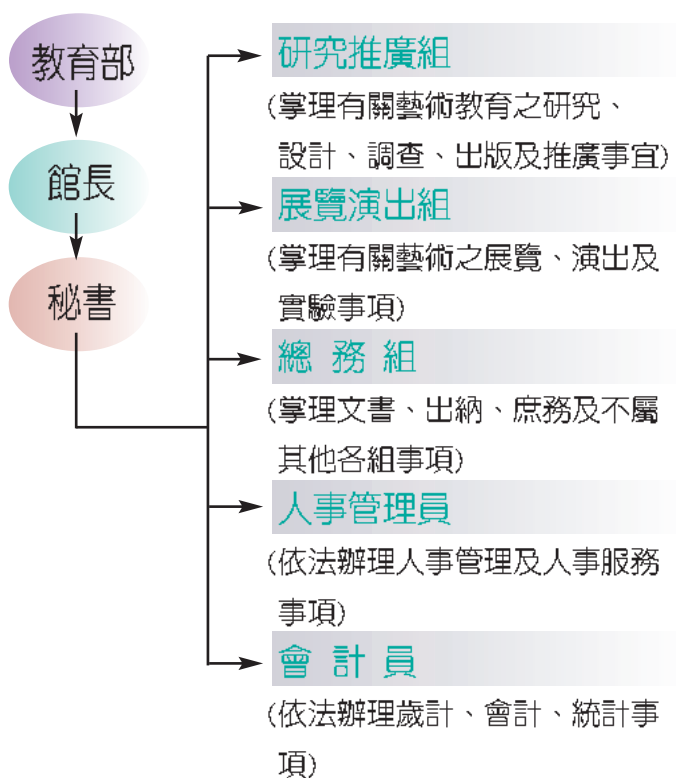
- (二) 本館營運至今已四十六年，在歷任館長吳寄萍先生、盧熟競女士、鄧昌國先生、王紹清先生、馮國光先生、紀登斯先生、李懷程先生、張俊傑先生及陳益興先生等之領導努力下，奠定良好的館務發展基礎。
- (三) 本館現任館長陳篤正先生除延續優良之館務作為外，並依現今社會需求大力推動社會藝術教育及輔導學校藝術教育，結合地方教育、文化機構團體，運用社會各項資源，促使藝術教育在各教育園地播種、生根。



I. Milestones

- (I) To reinforce community education and promote artistic activities, in the autumn of 1956, the Ministry of Education set aside a part of the Botanical Gardens on Nanhai Road, Taipei City, to build a national arts institute. On March 29, 1957, it was officially named the National Arts Institute but an interim statute in 1984 changed its name to National Taiwan Arts Education Center. When the official organization charter was established in 1985, the Center was formerly charged with the mission to study, promote and provide guidance for arts education in Taiwan.
- (II) It has been 46 years since the operation of the Center, and it has built an excellent foundation under the leadership of past directors Mr. Chi-ping Wu, Ms. Shu-ching Lu, Mr. Chang-kuo Teng, Mr. Shao-ching Wang, Mr. Kuo-kuang Feng, Mr. Teng-szu Chi, Mr. Huai-cheng Li, Mr. Chun-chieh Chang and Mr. I-hsing Cheng.
- (III) Apart from upholding the Center's legacy, the present director Mr. Du-cheng Chen endeavors to further community arts education and provide guidance for arts education in schools, and allow arts education to proliferate and take root in the various campuses by integrating resources of local education institutes, cultural institutes/groups and the community.

二、組織

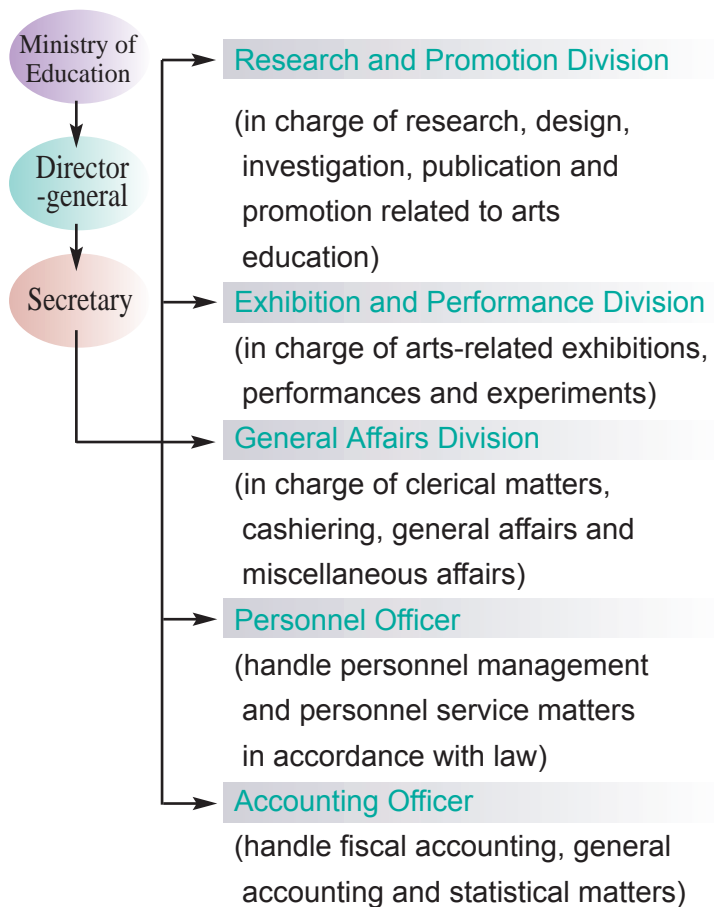


本館正門

The Center's front entrance



II. Organization



演藝廳舞台

Auditorium stage

三、本館的公共服務設施

(一) 演藝廳：

本館演藝廳為中小型劇場，呈鏡框式結構，適合音樂、戲劇、舞蹈等各類活動演出。

一樓有觀眾席座五二七位，二樓一二三位，中間以走道隔成三區，以便利觀眾出入。演藝廳開放時間視演出場次而定，一般而言：上午場為十時三十分；下午場為十四時三十分；晚上場為十九時三十分，每場均於演出前半小時入場。



演藝廳觀眾席

Auditorium audience seating

(二) 藝廊：

設於演藝廳一樓前廳及兩側，總面積二四〇平方公尺，辦理申請展及邀請展，以鼓勵創作，提昇美術作品水準，以及推廣藝術教育。館本部藝廊除換檔佈展外，每日上午九時至下午五時開放。



III. Public service facilities

(I) Auditorium

The auditorium is a small-to-mid-size theater framed by a proscenium arch, making it suitable for activities and performances such as concert, drama and dance.

There are 527 seats on the first floor and 123 seats on the second floor, and they are divided into three sections by walkways to facilitate audience access. The auditorium is opened according to performance schedule. In general, the morning show starts at 10:30, the afternoon show at 14:30 and the evening show at 19:30, and the audience must be seated half an hour before the start of each show.



本館藝廊

The Center's gallery

(II) Gallery

Sitting on an area of 240 square meters in the front lobby and both sides of the first floor, the gallery welcomes open exhibitions and invita-