

喬治·狄·福瑞

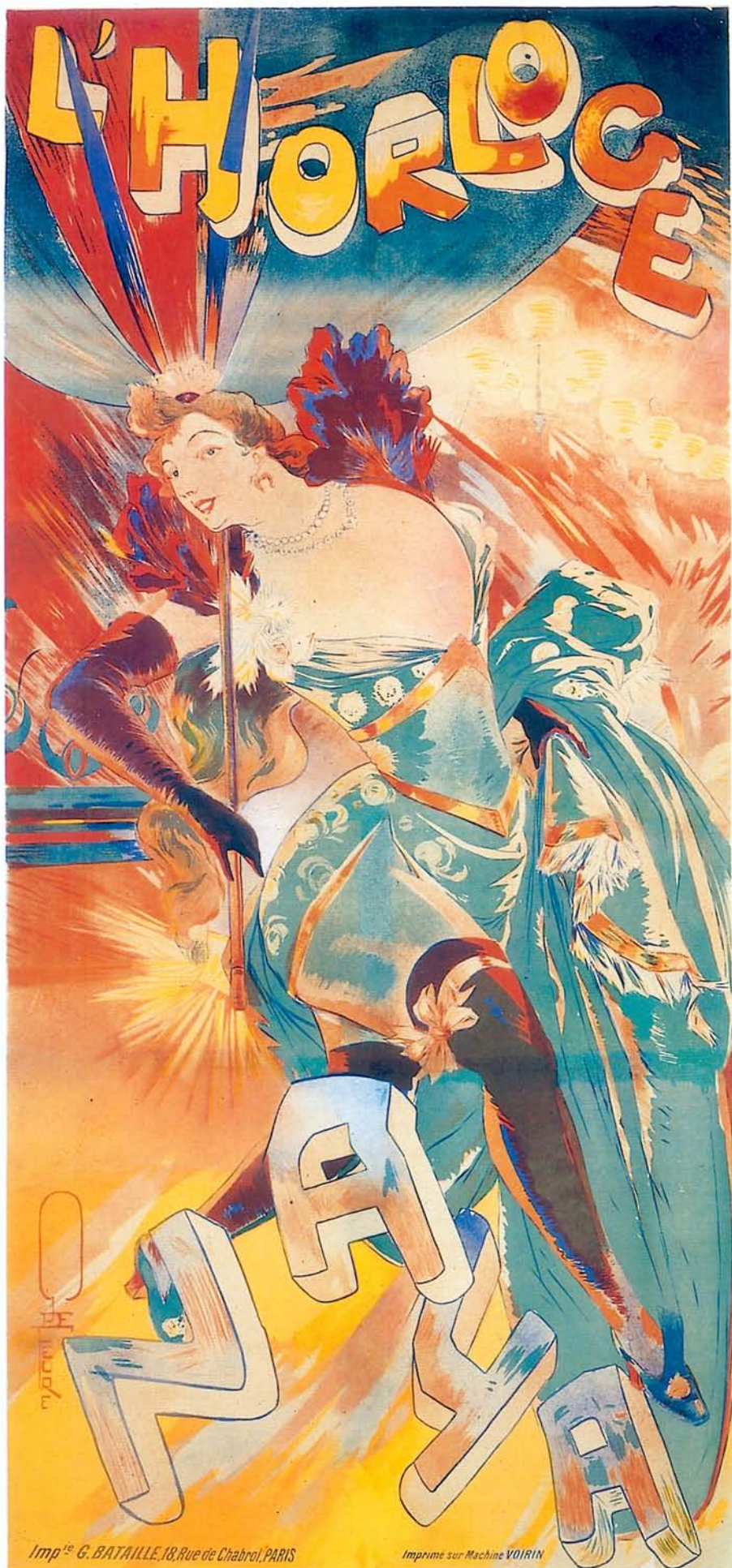
George De Feure (1868-1928)

喬治·狄·福瑞是一位優秀的設計師、插畫家、和海報畫家，他對裝飾和設計狂熱可以從他的海報作品之中看出。有人稱之為「海報詩人」。福瑞從小被人收養，受到養父的影響，他的藝術作品豐富、精彩而多變。

他的作品中所描繪的女人，常常給人一種孤立的感覺，這種寂聊的感覺成為他海報作品的特色。在他的作品「巴黎——阿馬那其」中，我們看到畫面稱景中形色匆匆的行人，與畫面主題中，拿著書本的女子，像是兩世界中的人，那種孤絕、疏離的感覺，躍然紙上。

De Feure was a fine designer, decorator, illustrator, painter and posterist. His zest for decoration comes through in almost all his posters. People call him "the poet of the poster". De Feure grew up as a adopted child, under his stepfather's influence he became one of the most versatile of the Art Nouveau artists.

De Feure usually showed the same type of women in his works, who is expensively and discreetly dressed. In the Paris-Almanach posters, we see the face of the woman is troubled, and she is at the same time the worrier and the schemer. It is typical of De Feure's work that woman is always seen in isolation.



Imp. G. BATAILLE, 18, Rue de Chabrol, PARIS

Imprimé sur Machine VOIRIN